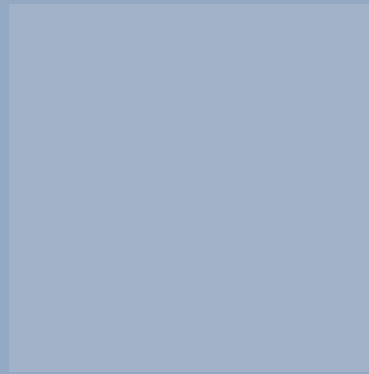
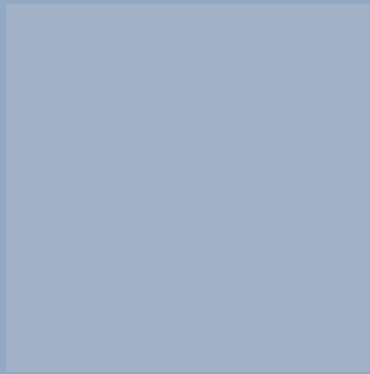
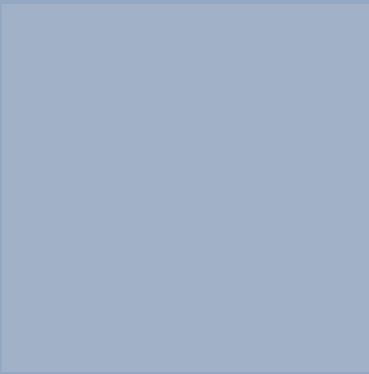
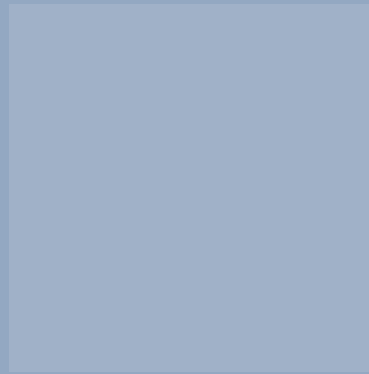
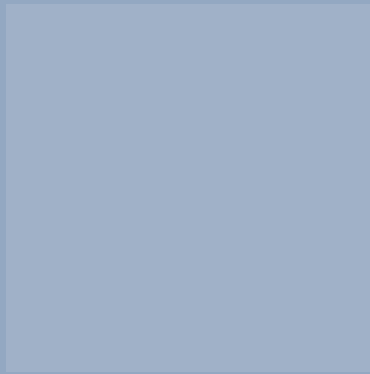
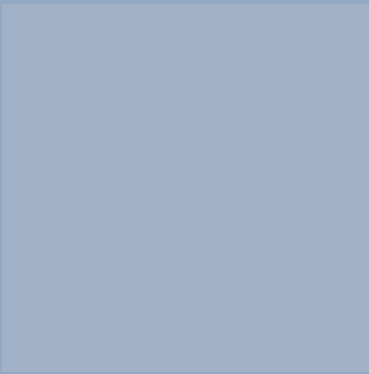
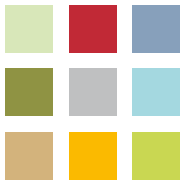


Royal Mead

RAILWAY PLACE | BATH



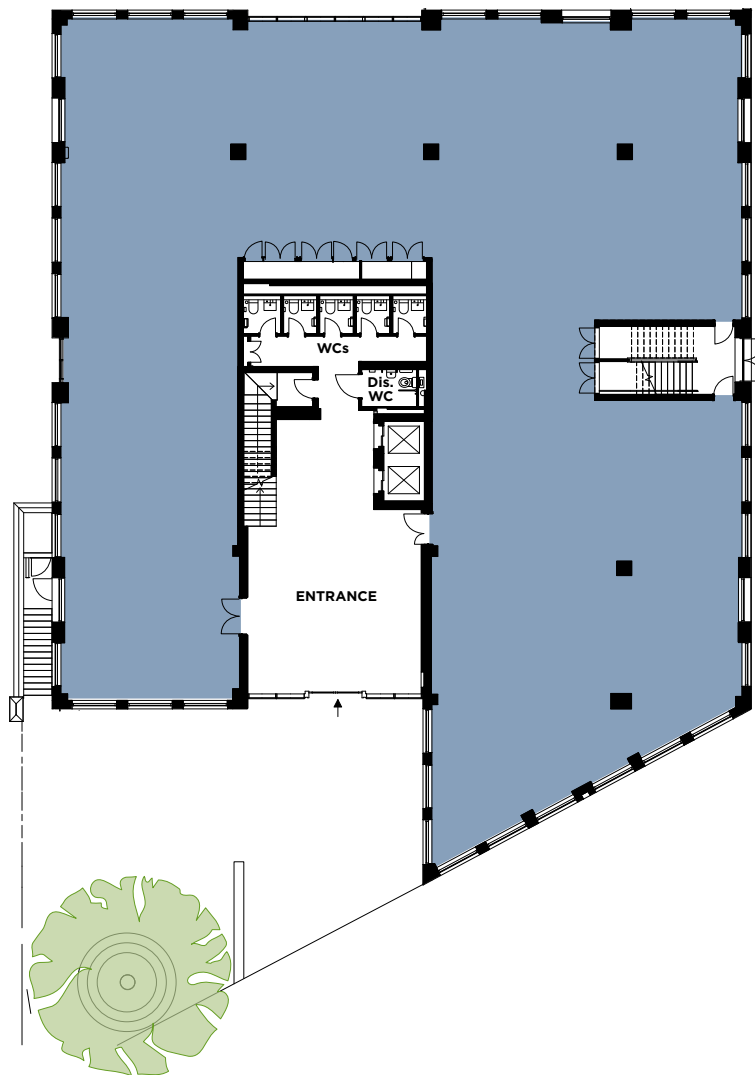
FLOOR PLANS

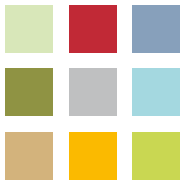


GROUND FLOOR

The floors will provide the following approximate areas:

FLOOR	sq m	sq ft
Third	384.6	4,140
Second	637.1	6,858
First	634.4	6,829
Ground	635.7	6,842
Total	2,291.8	24,669

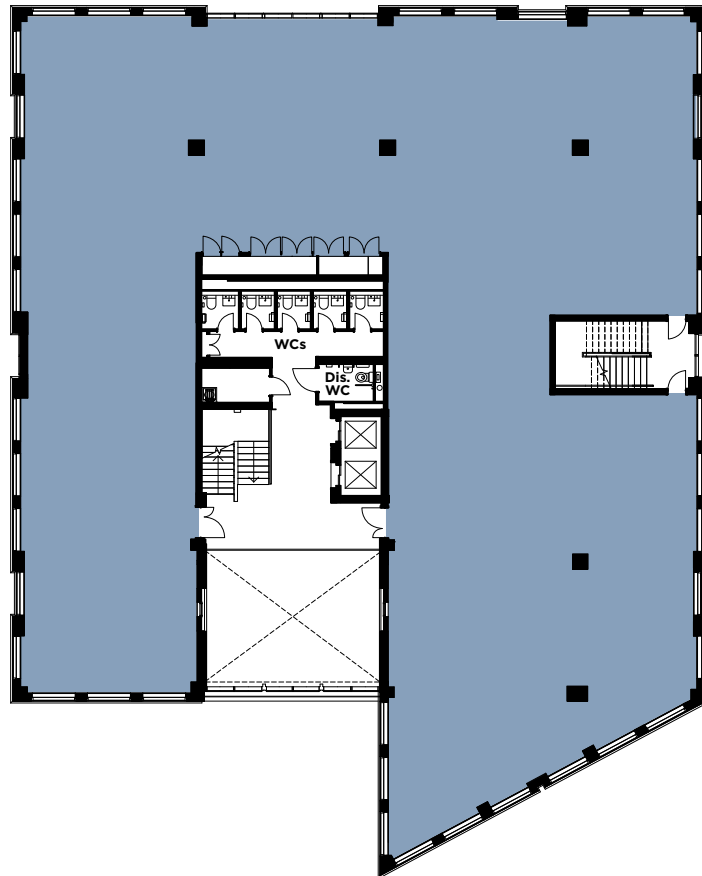


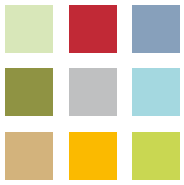


FIRST FLOOR

The floors will provide the following approximate areas:

FLOOR	sq m	sq ft
Third	384.6	4,140
Second	637.1	6,858
First	634.4	6,829
Ground	635.7	6,842
Total	2,291.8	24,669

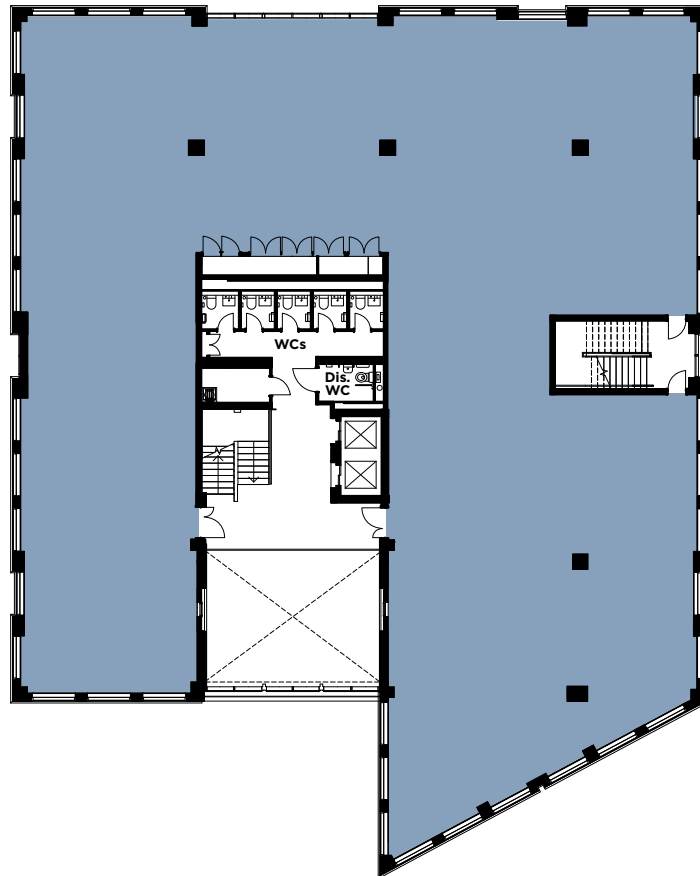


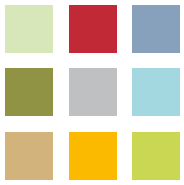


SECOND FLOOR

The floors will provide the following approximate areas:

FLOOR	sq m	sq ft
Third	384.6	4,140
Second	637.1	6,858
First	634.4	6,829
Ground	635.7	6,842
Total	2,291.8	24,669

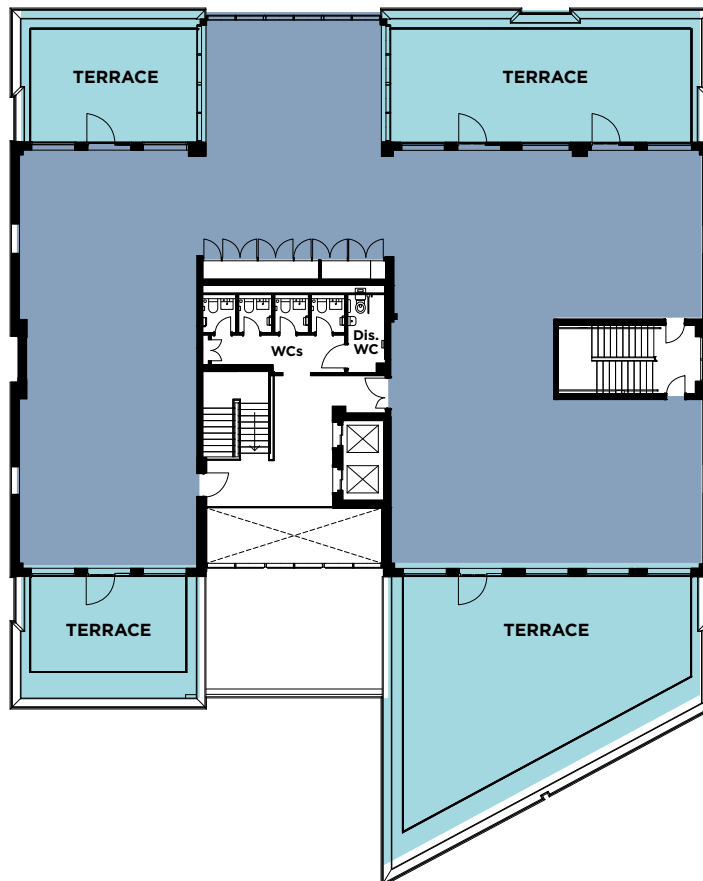




THIRD FLOOR

The floors will provide the following approximate areas:

FLOOR	sq m	sq ft
Third	384.6	4,140
Second	637.1	6,858
First	634.4	6,829
Ground	635.7	6,842
Total	2,291.8	24,669



royalmead.co.uk

A DEVELOPMENT BY:

CBRE
GLOBAL
INVESTORS



**ALCHEMY
ASSET
MANAGEMENT**

MISREPRESENTATION These particulars do not form part of any contract. Neither Lambert Smith Hampton or Knight Frank nor any of its directors, employees or agents is authorised to give or make any warranty or representation on behalf of any part. Whilst information and particulars are given in good faith, intending purchasers or tenants must satisfy themselves independently as to the accuracy of all matters on which they intend to rely. All negotiations are subject to contract. September 2021.

LEASING AGENTS:



Martin Booth
martin.booth@knightfrank.com

T 0117 917 4990
M 07768 884 921

Polly Smart
polly.smart@knightfrank.com

T 0117 917 4550
M 07929 673 626

**Lambert
Smith
Hampton**

Peter Musgrove
pmusgrove@lsh.co.uk

T 0117 914 2013
M 07841 684 906

Roxine Foster
rfoster@lsh.co.uk

T 0117 914 2011
M 07834 626 024